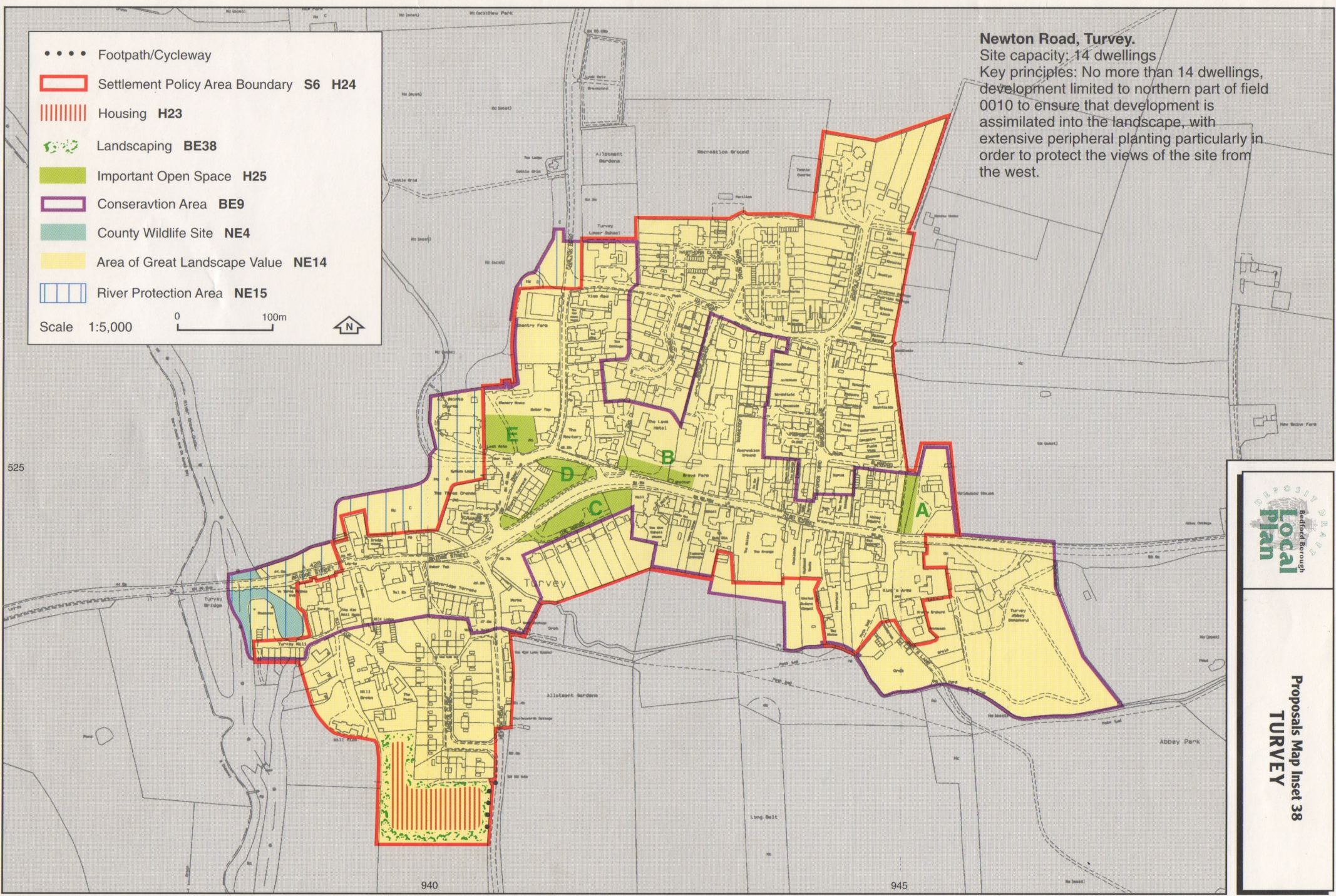


- Footpath/Cycleway
- Settlement Policy Area Boundary **S6 H24**
- Housing **H23**
- Landscaping **BE38**
- Important Open Space **H25**
- Conservation Area **BE9**
- County Wildlife Site **NE4**
- Area of Great Landscape Value **NE14**
- River Protection Area **NE15**

Scale 1:5,000 0  100m N

**Newton Road, Turvey.**  
 Site capacity: 14 dwellings  
 Key principles: No more than 14 dwellings, development limited to northern part of field 0010 to ensure that development is assimilated into the landscape, with extensive peripheral planting particularly in order to protect the views of the site from the west.



Proposals Map Inset 38  
**TURVEY**

Based on the Ordnance Survey map with the sanction of the Controller of H. M. Stationery Office. © Crown Copyright reserved. Bedford Borough Council Licence No. LA. 077127. Digitally produced by E.S.R. Ltd., Byles, Surrey.